

A practical guide to: Using Synergy with MorphOS and AmigaOS 4 (Written by Serge Alves Article - July 2014)

This short guide is designed to help you with your first experiences of Synergy on MorphOS & AmigaOS 4. The guide is divided into three parts:

Part 1: Configuring the Synergy Server.

Part 2: Connect to the Server from Synergy to Synergy user on MorphOS.

Part 3: Connect to the Windows Server from Synergy to Synergy user on AmigaOS 4.



Introduction - Synergy, what is it?

Many of us have multiple computers on our desks. Indeed, often a PC or Mac accompany our favourite machines to meet the needs not always covered by our beloved machines. Synergy is designed for having multiple computers on a desk while only needing one keyboard & one mouse. There are hardware solutions for this (the well-known KVM switch) but they still require a combination of keys or the pressing of a button, the keyboard & mouse control moves from one computer to the other.

Why Synergy rather than a hardware switch?

Synergy has a number of distinct advantages. Synergy is more intuitive than a hardware switch as you just need to push the mouse pointer/cursor to the edge of the screen of the one computer and the control is passed to the pointer/cursor of the other system the mouse is designated as passing control to for the other computer system. When the mouse has swapped to the other designated screen, the keyboard control will have automatically done so as well.

In addition to being a lot more intuitive than a hardware switch, Synergy provides other options such as sharing text via the clipboard. So, the copying / pasting process from one computer to another is a breeze.

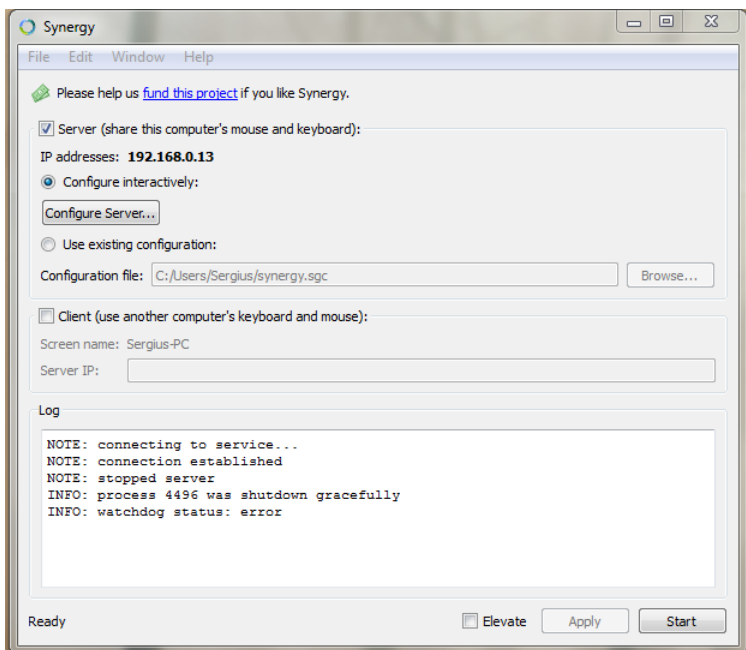
The only criticism, I am aware of, is that Synergy requires the designated computer named "server" (that has the initial keyboard & mouse control) to be switched on to be able to use Synergy on the other computers. For some users, it may be too troublesome & for others it may not be an issue. Also, remember that you can use Synergy plus a hardware switch, which can be handy in certain situations. So we can enjoy the simplicity & robustness of Synergy in combination with a KVM switch.

Synergy How it works?

Synergy is based on IP technology, so your computer will be connected to the same network. Whatever your connection type, wired or not. Your desktop systems will by necessity consist of a computer with a keyboard and mouse. One system will be your Synergy server with which you connect with other systems. The Synergy Server exists for three Windows, Mac OS X and Linux. Officially, the OS4 client is compatible with the Windows and Linux servers and now following the 3.6 update the MorphOS system is now also compatible with the Windows and Mac OS X servers

Part 1 - Configuring the Synergy Server - the heart of the tutorial.

Download the Synergy server version for your system on the official site here: [synergy-project.org / hl = en?](http://synergy-project.org/hl=en?)



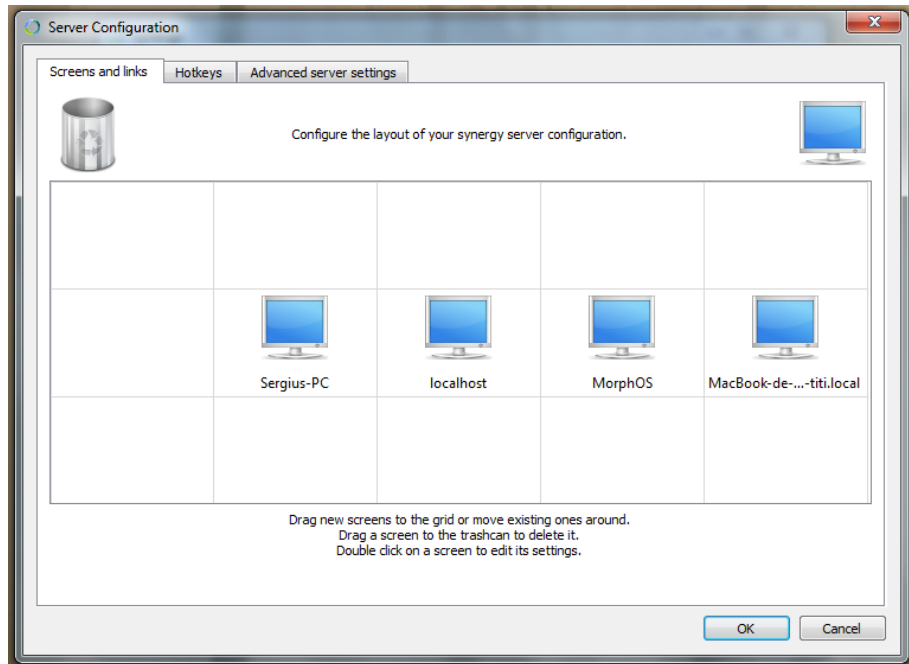
To install the Synergy Server: Run Synergy Server and you will get a window similar to the one to the left. Here is the server on Windows, but Mac OS X is identical.

Note the IP address of your server computer, it will be necessary later.

The IP address - is displayed in bold.

Go to "Configure Server" to identify your intended client and to define where to find the screen relative to that server.



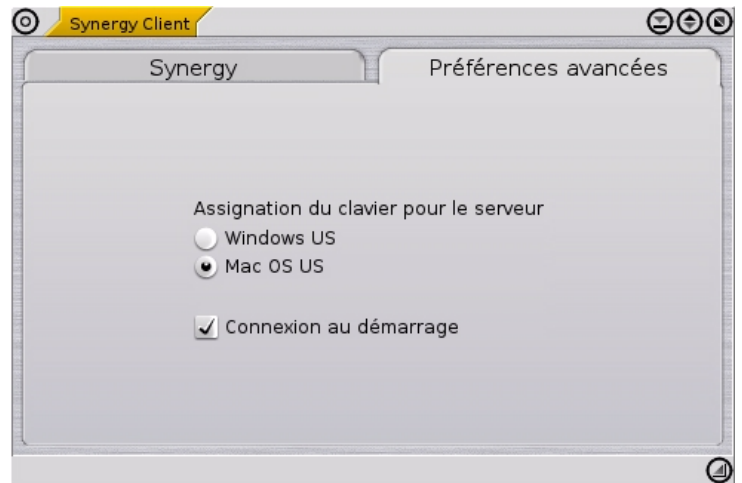
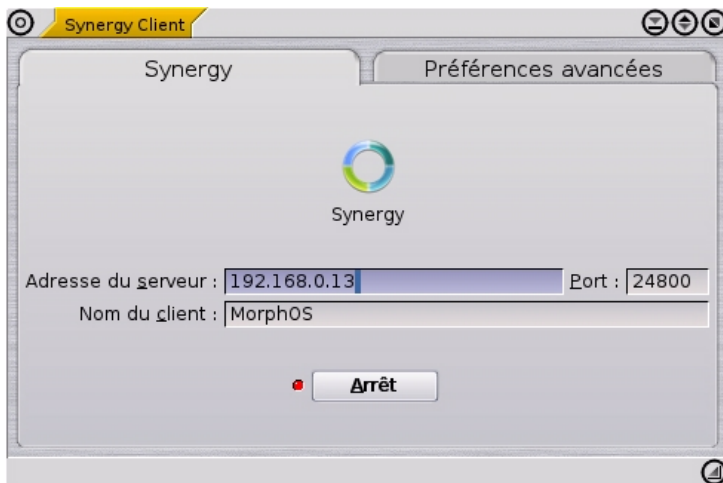


When you open this window, a blue image of a monitor appears in the middle displaying the network identifier of your PC. Now you can move it as you see fit. You then place another blue monitor image representing your client by dragging the one at the top right to indicate to the server where your client is physically. In the case above, we have the PC server on the left, and the three others - AmigaOS 4, MorphOS and Mac OS clients, respectively, on the right. You must name each of your clients with their network name. In the case of client MorphOS, the default name is "MorphOS". This is changed on the first page of the client Synergy. In the case of AmigaOS 4, the default name is "localhost". Basically, you're now done with the basic configuration of your server. Exit the configuration window and click "Start" in the lower right. Your server is now awaiting the client(s) you just told it to recognize which soon occurs.

Part 2. - Connect to Synergy Server Windows or Mac OS X from the Synergy client MorphOS

From version 3.6 of MorphOS, a Synergy client is shipped with the system. You will find it in the "Applications" folder.

Run it. Have a look in the "Advanced Settings" tab and choose the system that you have set as your server. This option will allow the correct recognition of the keyboard of the server for your client. On this page, you can also enable Synergy from the start, an essential option if you plan to, in the future, go completely keyboard and mouse with your MorphOS client. You can then return to the main tab and then enter the IP address of your server. Enter the address in bold on the interface of your server and end with the "Connect" button. After a second the connection should be made. ;-)



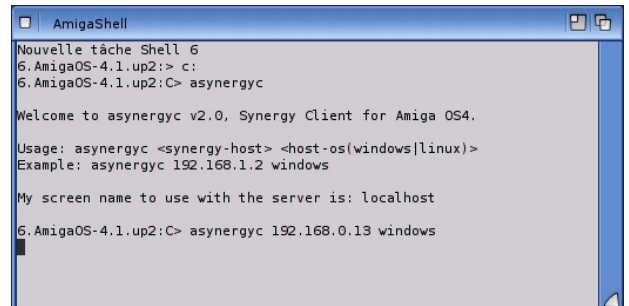
Part 3. - Connect to the Windows Server from the Synergy client for OS4

Download the Amiga Synergy Client 2.0 from OS4Depot:

os4depot.net/share/network/misc/amisynergyc.lha .

Unzip the archive and copy the "aSynergyc" where you want the file stored, I suggest you put it in the C: directory. Open a Shell and navigate to where your freshly installed file aSynergyc is located. Then type "**192.168.0.13 aSynergyc windows**". You must, of course, put the IP address of your server, that was shown in **bold** on the interface of your **Windows server**. If you use a Linux server, then replace in the command line the term "windows" with "linux". One or two seconds later, you should be connected. ;-)

You can then insert the command in your startup to make the aSynergyc start up automatically each time you boot up.



The last word and the voice of prudence

Although I had no problems with Synergy during my first tests, given the very recent release of this new Synergy client for MorphOS and the very advanced client for AmigaOS 4 age (2006), you shouldn't be surprised if an unexpected error is encountered while using it. It is for this reason that I strongly advise you to keep at hand a mouse and a USB keyboard in order to control your computer in case of any malfunction of Synergy.

N.B. Personally, I have gained enormously from using it, so let's hope it is also just a pleasure for you too.

